

**Your Global Strapping Expert with Proven Quality and Certified Products**



# LIFEX® POLYESTER CORDED STRAPPING

## Excellent Break Strength

LIFEX® is produced 100% with high tenacity industrial polyester cords and it is highly reliable in any kind of securing, baling and palletizing application.

## Safe to Use

LIFEX® does not cause any risk of damage during tensioning and injury while removing the strapping because it is made 100% out of polyester.

## Delicate Packaging

LIFEX® ensures no damage on the surface or at the corners of delicate products. It prevents scratches, does not corrode and stain.

## Elongation and Elastic Memory

Elongation and elastic memory features of polyester cords allow LIFEX® to be tensioned perfectly on any type of surface.

## LIFEX® Product line is used for palletizing, unitizing, bundling

- Competitive alternative against steel or other strapping and packaging options.
- Competitive alternative against woven strapping for securing complete loads in containers, etc.
- Competitive alternative for one-way cargo securing system (eg. steel, ratchet or heavy steel wire)
- LIFEX® Polyester corded strap is as strong as steel strap, suitable for medium and heavy loads.
- LIFEX® Polyester corded strap has a natural shock absorption (eg. dynamic load).
- LIFEX® can be disposed easily without creating large volume of scrap.

## Manual Applications

LIFEX® is a light and practical product. It can be applied and removed by hand in complete safety without extra precautions.

## Endurance to Severe Weather Conditions

LIFEX® maintains its shape and tension completely under rigorous weather conditions. It is resistant to high temperature, ultraviolet rays and moisture.

## Application with Low-Cost Hand Tools

Compared to other plastic straps, LIFEX® can be applied with simple, light and trouble-free hand tools, which are very sturdy and economical.

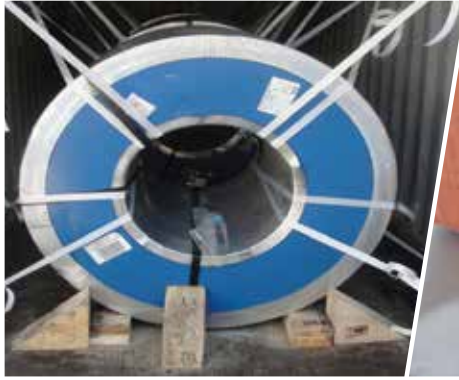
## Product Customization

Thanks to the leading edge technologies we use, you can customize and personalize your LIFEX® products according to your needs by printing your brand, slogan or messages on security in three different colors.





# TECHNICAL SPECIFICATIONS



## LIFEX® Composite Strapping

The polyester is co-extruded with plastic and shows excellent properties. Surface coating avoids damage against rubbing. Composite strapping is UV proof, waterproof and recommended for temperatures up to 80°C.



## LIFEX® Textile Strapping

The polyester is bonded together with hot melt. This type of strapping is mainly used for outdoor applications (like wood industry) and also for load securing. Hot melt strapping is waterproof and recommended for temperatures up to 60°C.

	CODE	WIDTH	BREAK STRENGTH	COIL LENGTH
FIBER BALING	BL - 9	9 mm	210 kg	1.800 m
	BL - 13	13 mm	300 kg	1.500 m
	BL - 16	16 mm	365 kg	1.200 m
	BL - 19	19 mm	400 kg	600 m
BALING	BLN - 8	8 mm	230 kg	500 m
	BLN - 9	9 mm	275 kg	500 m
	BLN - 11	11 mm	340 kg	500 m
	BLN - 13	13 mm	390 kg	500 m
	BLN - 16	16 mm	470 kg	340 m
LIGHT DUTY	LD - 9	9 mm	225 kg	1.800 m
	LD - 13	13 mm	325 kg	1.500 m
	LD - 16	16 mm	400 kg	1.200 m
	LD - 19	19 mm	500 kg	600 m
MEDIUM DUTY	MD - 9	9 mm	275 kg	1.500 m
	MD - 13	13 mm	390 kg	1.100 m
	MD - 16	16 mm	470 kg	850 m
	MD - 19	19 mm	570 kg	600 m
HEAVY DUTY	HD - 13	13 mm	550 kg	850 m
	HD - 16	16 mm	620 kg	600 m
	HD - 19	19 mm	750 kg	500 m
	HD - 25	25 mm	1000 kg	500 m
	HD - 30	30 mm	1200 kg	150 m
	HD - 35	35 mm	1350 kg	150 m
SUPER HEAVY DUTY	SHD - 19	19 mm	980 kg	400 m
	SHD - 25	25 mm	1250 kg	400 m
	SHD - 38	38 mm	2000 kg	100 m

	CODE	WIDTH	BREAK STRENGTH	COIL LENGTH
LIGHT DUTY	CLD - 13	13 mm	230 kg	1.100 m
	CLD - 16	16 mm	300 kg	850 m
	CLD - 19	19 mm	325 kg	600 m
	CLD - 25	25 mm	450 kg	400 m
MEDIUM DUTY	CMD - 13	13 mm	330 kg	1.100 m
	CMD - 16	16 mm	450 kg	850 m
	CMD - 19	19 mm	500 kg	700 m
	CMD - 34	34 mm	1.250 kg	300 m
HEAVY DUTY	CHD - 16	16 mm	530 kg	750 m
	CHD - 19	19 mm	600 kg	650 m
	CHD - 25	25 mm	825 kg	500 m
	CHD - 32	32 mm	1.250 kg	300 m
CHD - 34	34 mm	1.500 kg	400 m	
SUPER HEAVY DUTY	CSHD - 25	25 mm	1.000 kg	500 m
	CSHD - 26	26 mm	1.350 kg	300 m
	CSHD - 32	32 mm	1.650 kg	300 m

## Accessories



## OUR GLOBAL QUALITY COMMITMENTS



LIFEX is certified by AAR (Association of American Railroads) for selected lashing and composite strapping products for open-top loading requirements.



Our products and brands are certified and rigorously tested, approved by The Turkish Standards Institution, TSE.



Starting from day One of our journey we have established a quality management system that is in conformance with the ISO 9001:2015 International Quality System Standard.



We continuously monitor and ensure that our final products are with superior quality and consistency, thanks to our dedicated, fully equipped and state of the art laboratory.

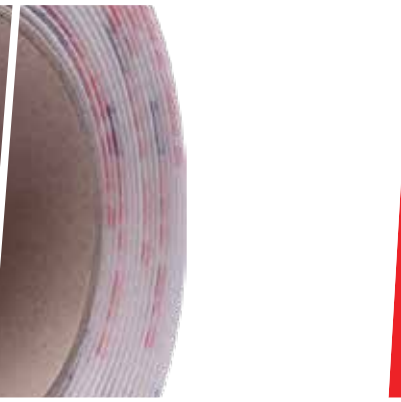


We have DNVGL certification for specified lashing and composite strapping products. We comply with ASTM D3950 Standard for nonmetallic strapping methods.



LIFEX manufacturing and management system fully complies with Sustainability and Environmental Management Standards. We have ISO 14001:2015 International Environmental Management System

# Your Global Strapping Expert with Proven Quality and Certified Products



POLYESTER CORDED STRAPPING

[www.lifexstrap.com](http://www.lifexstrap.com)

## Factory :

Dilovası OSB Mah. D-5007 Sk. MPS  
Blok No:18-20 İç Kapı No:1 41455  
Dilovası - Kocaeli - TÜRKİYE

**Phone:** +90 (262) 648 98 00

**Fax :** +90 (262) 648 98 98

## Office :

Barbaros Mh. Mor Sümbül Sk. Varyap Meridian  
Business 1 / Blok Kat : 4 No: 50-54  
Batı Ataşehir 34758 İstanbul / TÜRKİYE

**Phone:** +90 (216) 504 10 08 - 09

**E-mail:** [sales@mpsmetal.com.tr](mailto:sales@mpsmetal.com.tr)